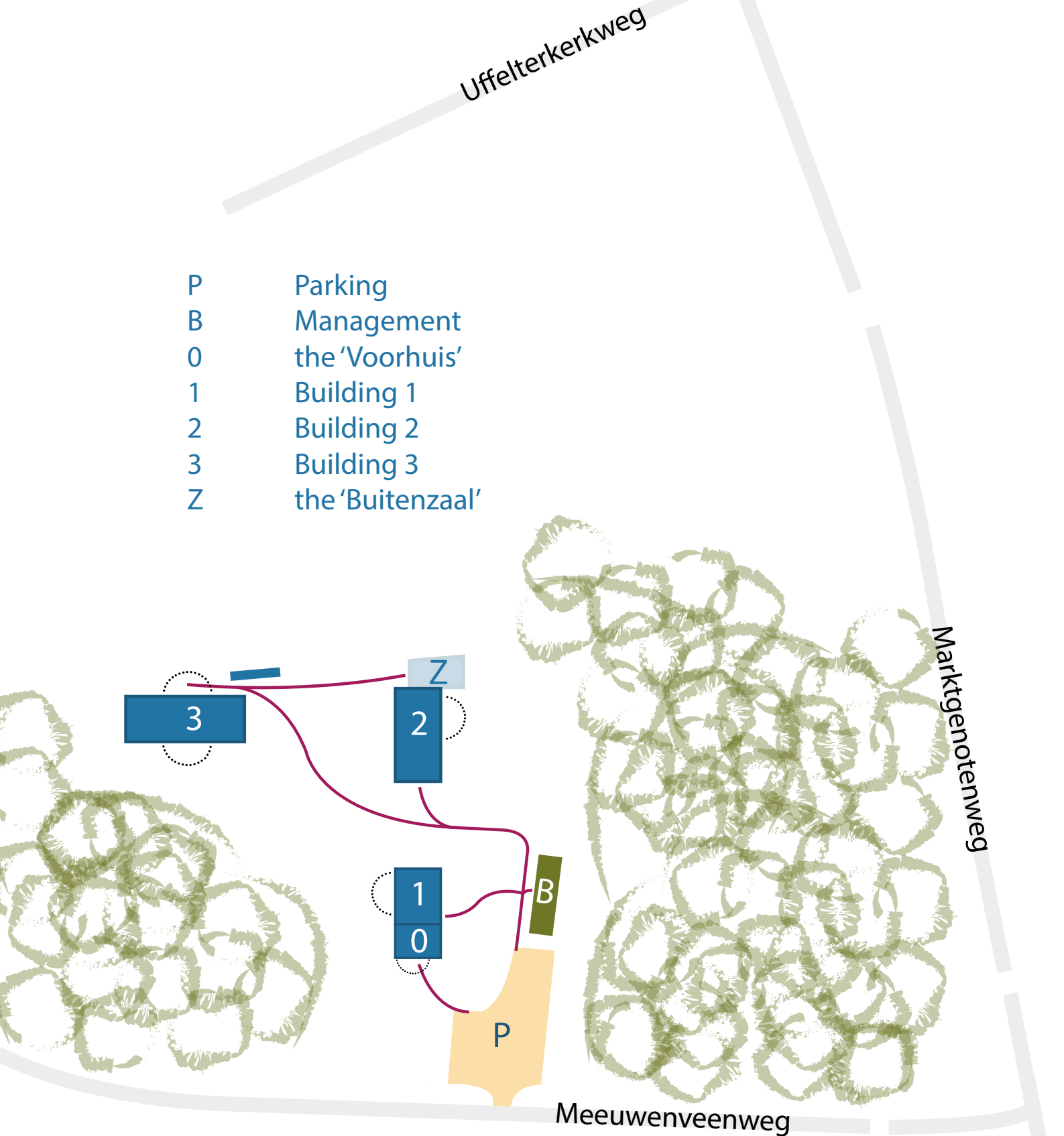




## Information the "Voorhuis"

- P Parking
- B Management the 'Voorhuis'
- 0 Building 1
- 1 Building 2
- 2 Building 3
- 3 Building 3
- Z the 'Buitenzaal'





## Ground plan and info the “Voorhuis”

### Ground level



- double-bed sitting room with bathroom and conservatory
- 2 toilets
- main room
- full equipped dining kitchen





The "Voorhuis" with terrace and entrance



## First floor



- double bedrooms with washing stand
- 2 toilets
- 2 showers
- escape route / acces to building 1 (unlocked when the "Voorhuis" and building 1 are hired together)

