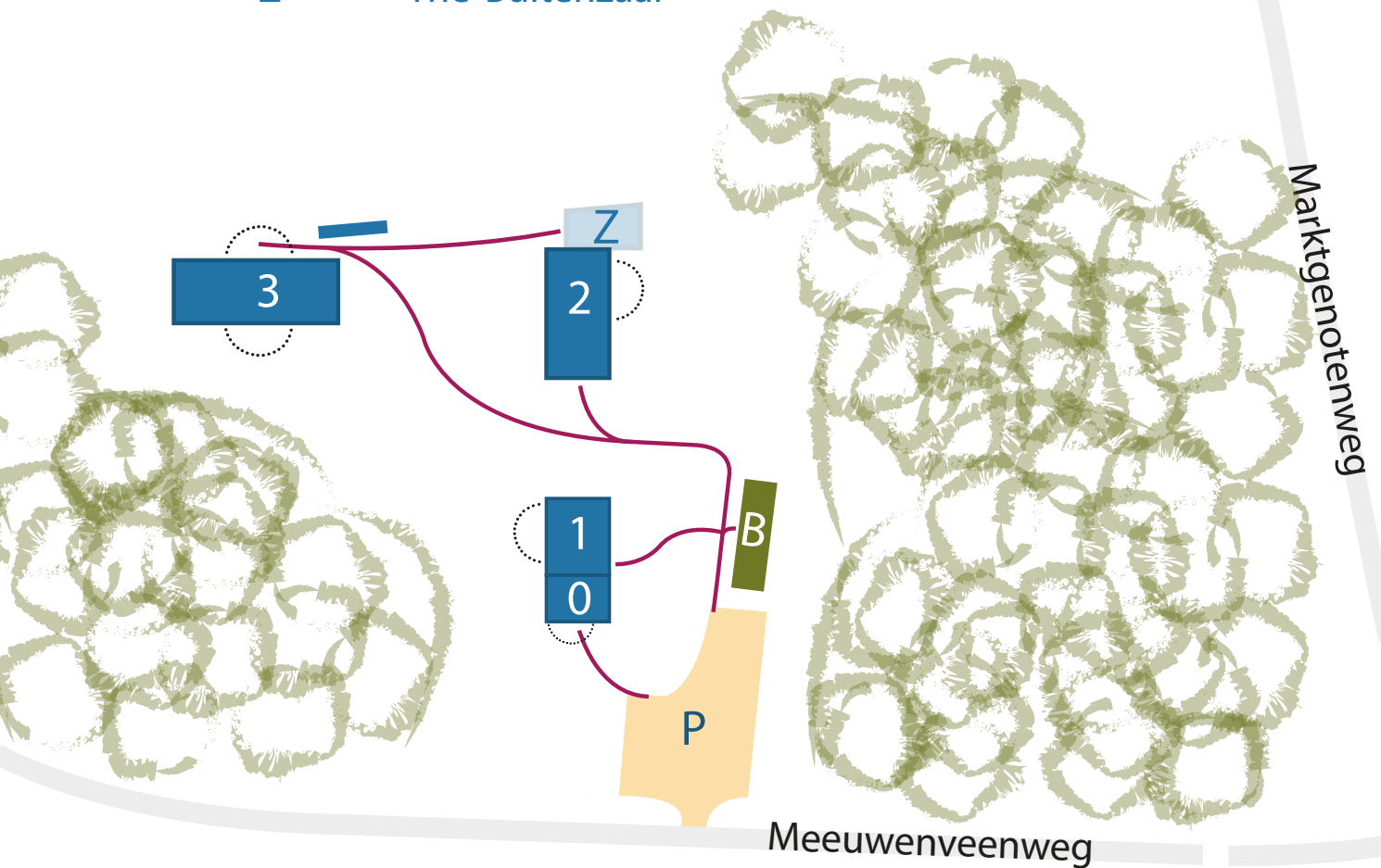




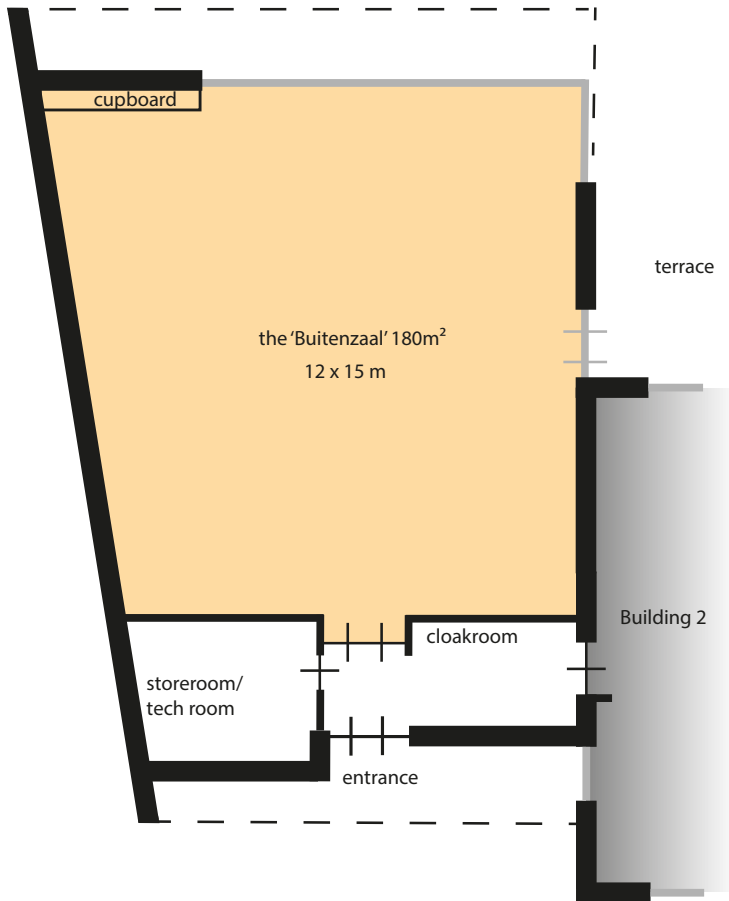
Information the 'Buitenzaal'

- P Parking
- B Management
- 0 The 'Voorhuis'
- 1 Building 1
- 2 Building 2
- 3 Building 3
- Z The 'Buitenzaal'





Ground plan and information the 'Buitenzaal'



Ground floor

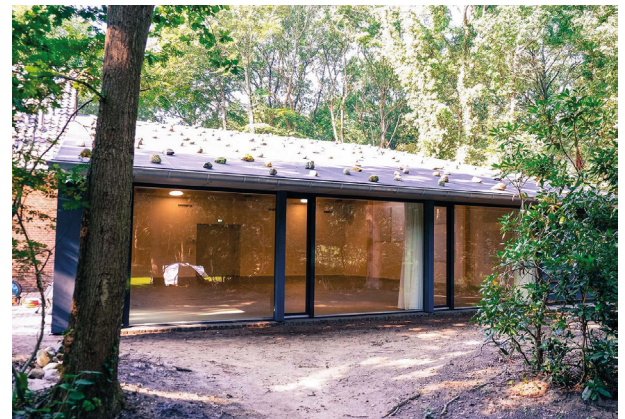
The 'Buitenzaal' is only rented in combination with building 2 because that's where the facilities are. The entrance has connections for extra kitchen appliances.

The 'Buitenzaal' is suitable for at least 100 people.

- main room
- storeroom/ tech room
- cloakroom



The 'Buitenzaal' with building 2 in the background



garden/ forest



main room